

Date and place of celebration:

22nd and 23rd May 2017

Faculdade de Ciências Sociais e Humanas (FCSH/UNL)
Edifício I&D, Sala Multiusos 2 (4^o piso)
Lisboa

Free inscription until 20th May 2017 in:
iem.geral@fcsch.unl.pt

Organization:

ArtMedGIS Project (MSCA – H2020, No 699818)
Instituto de Estudos Medievais (IEM – FCSH/UNL)

Direction and coordination:

María MARCOS COBALEDA (IEM – FCSH/UNL, Lisbon)

Faculty:

Antonio GARRIDO ALMONACID (UJAEN, Spain)
Jean PASSINI (LaDéHiS – CRH – EHESS, Paris)
María MARCOS COBALEDA (IEM – FCSH/UNL, Lisbon)
Dolores VILLALBA SOLA (IEM – FCSH/UNL, Lisbon)

This course has received funding from the European Union's Horizon 2020 research and innovation program under the Marie Skłodowska-Curie grant agreement No 699818 (ArtMedGIS Project)



European
Commission

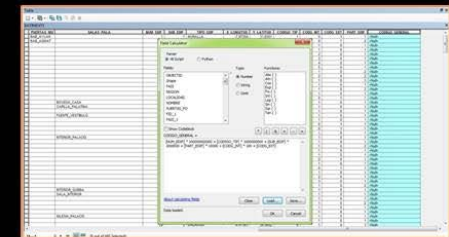
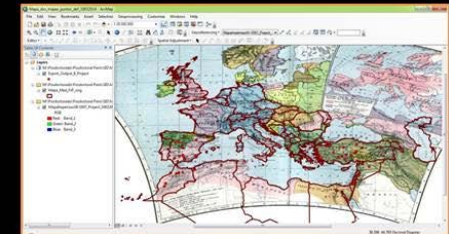
Horizon 2020
European Union funding
for Research & Innovation



FCT
Faculdade de Ciências
Sociais e Humanas
Universidade Nova de Lisboa

1st International Course of the ArtMedGIS Project

Lisbon, 22nd – 23rd May 2017



The Application of the Geographical Information Systems (GIS) to the Research in Humanities



European
Commission

Horizon 2020
European Union funding
for Research & Innovation



FCT
Faculdade de Ciências
Sociais e Humanas
Universidade Nova de Lisboa

Purpose:

The aim of this International Course is to make an approach to the use of new technologies in the research in medieval History and Art History. Within the current tendency of the Digital Humanities, it becomes necessary the introduction of innovative perspectives of analysis of historical phenomena, and this course is inserted in this frame. During the first day there will be an introductory theoretical part to become familiar with the Geographical Information Systems (GIS). It will be followed by the exposition of several real applications of this methodology to the research in urban history, medieval written sources and artistic exchanges. The teachers of the course are experts from French, Spanish and Portuguese research centres, who have applied to their own research this method in different ways.

During the second day, a practical session will be developed. In this session, all participants will be proposed to apply the GIS tools to their own research projects. They will explore the possibilities of the GIS to create a basic database and some cartographical material. To achieve these results, **all participants must attend with their own laptop and they are invited to install in advance the QGIS program following this link:** <https://www.qgis.org/es/site/forusers/download.html>

Objectives:

1. To become familiar with the Geographical Information Systems (GIS) and their possibilities
2. To learn and practice basic functions of the QGIS program for the creation of databases and cartographical materials
3. To apply the Geographical Information Systems (GIS) to the own research project

Program:

Monday, 22nd May 2017

9h45 – 10h00

Presentation

10h00 – 11h45

Antonio GARRIDO ALMONACID (UJAEN, Spain), *Los Sistemas de Información Geográfica. Características y funcionamiento*

11h45 – 12h10

Coffee break

12h10 – 13h00

Jean PASSINI (LaDéHiS – CRH – EHESS, Paris), *De las marcas de pedreros a las mezquitas: aplicaciones del SIG al urbanismo medieval y a la arquitectura*

13h00 – 15h00

Lunch

15h00 – 15h50

María MARCOS COBALEDA (IEM – FCSH/UNL, Lisbon), *Intercâmbios artísticos no Mediterrâneo medieval: os SIG para a análise da difusão da arte islâmica medieval*

15h50 – 16h15

Coffee break

16h15 – 17h00

Dolores VILLALBA SOLA (IEM – FCSH/UNL, Lisbon), *Os desafios das fontes árabes nos Sistemas de Informação Geográfica: o caso almóada*

Tuesday, 23rd May 2017

10h00 – 11h15

Antonio GARRIDO ALMONACID (UJAEN, Spain), *Prácticas con QGIS aplicadas a proyectos de investigación (I)*

11h15 – 11h45

Coffee break

11h45 – 13h00

Antonio GARRIDO ALMONACID (UJAEN, Spain), *Prácticas con QGIS aplicadas a proyectos de investigación (II)*